

極東沿岸襲来の預言超津波は米海底爆弾.

<http://www.777true.net/Undersea-Explosion-The-SATAN-Propesied.pdf>

阪神淡路大震災 1995、東北大震災 2011 と同じ地震津波兵器である。

③は政治テロ破滅可能性だから政治解消する！！、2025/2/19,20,26;3/2

[1]:要約。

①預言海面地下現状は死火山。

日本列島水没預言のたつき涼氏の核心になるフィリピン海面隆起震源点海底盆地下部<九州パラオ海嶺(KPR)=過去の海底火山列>に通常の見海溝性海底火山噴火に対応するマグマ存在は 2016 年画像診断{(1)KPr40, (1)KPr41}ではない模様だろう。

②突然の巨大ホットスポット発生火山爆発の可能性希薄。

問題のフィリピン海プレート境界周囲火山活動は全て海水浸透海溝沈降に伴う高温高压の水結合マグマ<水蒸気爆発主因>形成地下に起因する。水結合無しではホットスポット火山爆発だがフィリピン海プレートにホットスポットは過去にはない。プレート下部は太平洋側から大陸に向けて沈降だから低温高密度域となる。ホットスポットとは真逆になる。

③預言海面隆起は人為爆発合成津波以外にない?! !。

(1) 1965 年フィリピン海 A-4 事件:1Mt 核兵器搭載機日本沖に墜落:

https://en.wikipedia.org/wiki/1965_Philippine_Sea_A-4_incident *1Mt= 4.184x10¹⁵J~M7x2.

機体、パイロット、核兵器は回収されなかった。

武器の数:ロスアラモス国立研究所の文書では 2 つの武器が関与していたと示唆している。

(2)そもそもフィリピン海プレート歴史的地上最強の地震火山活動地域焦点にある。

Earth's plate tectonics began "more than 3.3 billion years ago" - latest research

<https://forbesjapan.com/articles/detail/69000>

(3)預言点は周囲海底火山中央、爆発衝撃波-バブルパルス-津波は周囲海底火山へ向かう。

(4)海底火山は海底水素爆弾(1MtonTNT=M7x2)で引き金になる。

(5)海底活火山列は連動爆発可能性がある。

(a)海底火山爆発は強力なバブルパルス発生でマグマ溜り破壊に作用できる。

(b)地震と違い、連動遅延時間は短い。

(c)海底火山列連動爆発で極東アジア沿岸に超津波、

(d)火山爆発連動等で地盤軟化等で東シナ海海底隆起可能性が起こる。

(6) 2025/7/5 フィリピン海中央が突然隆起の巨大津波、極東沿岸襲来、

日本列島 1/3,4 が水没、台湾香港が地続き<たつき涼の預言>、

<https://www.youtube.com/watch?v=gvgq-XTbh3fk>

<https://www.youtube.com/watch?v=WtN-tGIYuf8>

(7) ババ・ヴァンガ 2025 年予言_地震火山でない未知力巨大津波襲来<11:30>

<https://www.youtube.com/watch?v=ZpOSozfNB-U>

[2]: 補足解説

① 預言海面地下現状は死火山。

(1) 2016年2月, 西澤あずさ, 金田健太郎, 及川光博..... <(1)KPr40, (1)KPr41の画像参照>

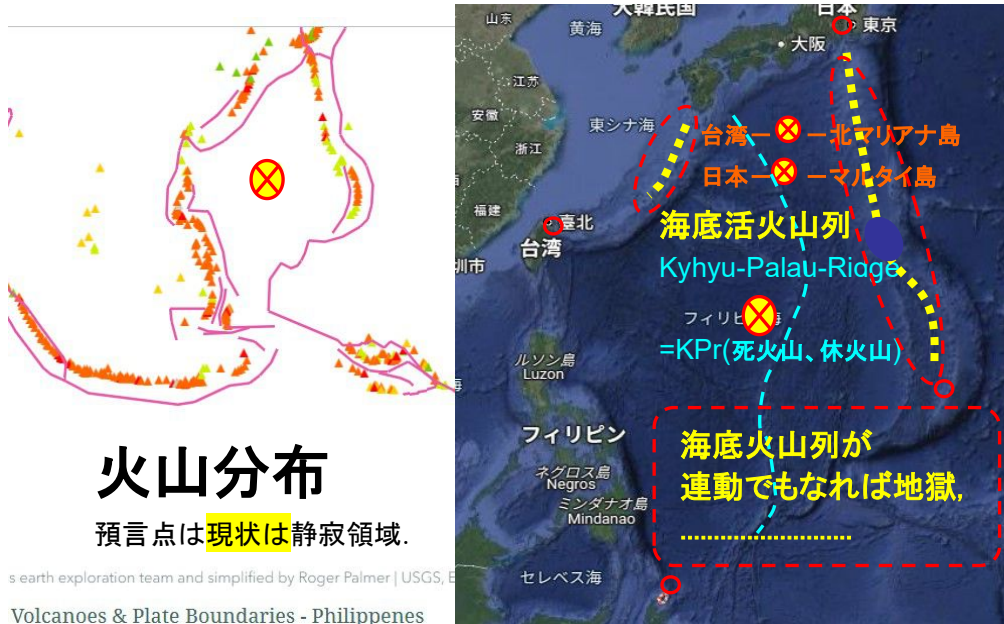
フィリピン海プレート中央にある長さ 2,600 km の残存島弧である九州パラオ海嶺(KPR)に沿った地殻構造の変化を調べるため、27 の広角地震プロファイルを取得しました。26 のラインは KPR の走向に沿って北緯 13 度から 31 度にかけて撮影され、1 つは KPR の最北端に沿って撮影されました。得られた P 波速度は...

https://www.researchgate.net/figure/p-models-of-the-Daito-Ridge-and-checkerboard-test-results-and-ray-coverage-a-Vp-models_fig1_265417720

(2) たつき涼氏の海面隆起震源点 ☒

how many seafloor volcano are there in philippine plate

<https://storymaps.arcgis.com/stories/d136fea6ad30480f82359849c52957e7>



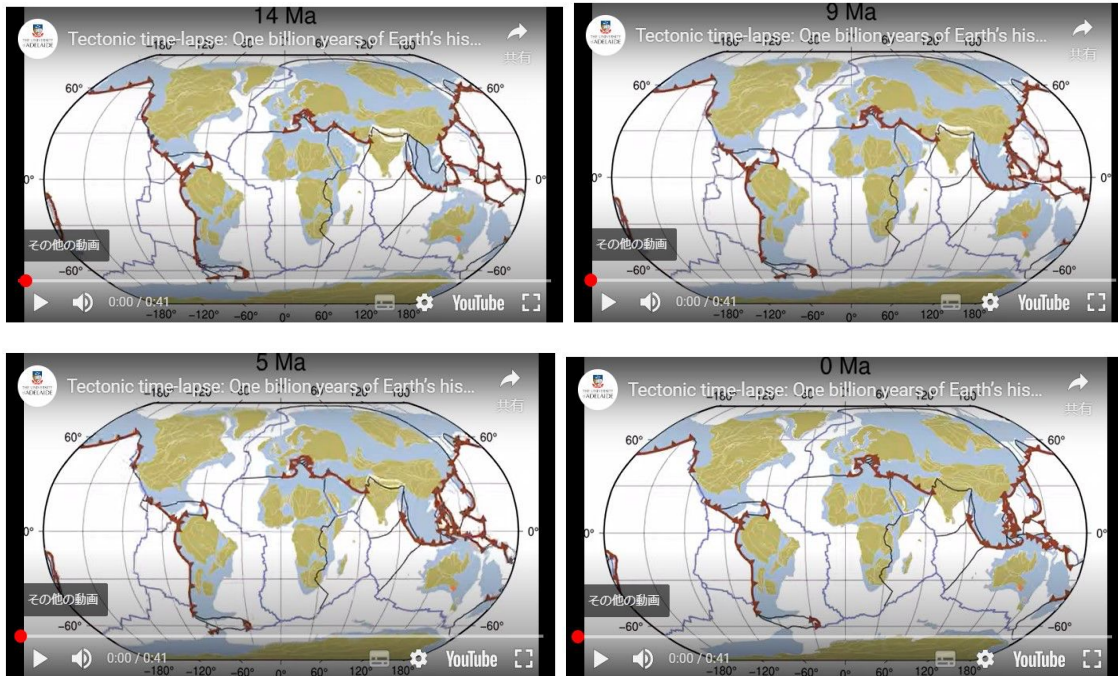
https://www.researchgate.net/figure/Tectonic-map-The-characteristic-seafloor-topography-of-the-Philippine-Sea-plate-on-the_fig5_265417720

[Wide-angle refraction experiments in the Daito Ridges region at the northwestern end of the Philippine Sea plate](#)

73000 年前、万年一度の鹿児島先の火山列最北端 = 鬼界カルデラ超爆発で楽園縄文文明日本は地獄へ、縄文人多数難民化で一部は大陸避難、時期同期して通説人類最古中東シュメール文明勃興、円環状分布の海底火山が現代にて同様地獄事態は大いにありえる、

(3) フィリピン海プレート周辺境界極不安定性

Philippine Plate **the Most(maybe) Radical Motion** in the recent past history.



Earth's plate tectonics began "more than 3.3 billion years ago" - latest research

<https://forbesjapan.com/articles/detail/69000>

鬼界カルデラ総合調査

<https://www.jamstec.go.jp/rimg/j/research/kikaicaldera/>

13 万年, 9 万 5000 年前超巨大噴火, 7300 年前鬼界カルデラ噴火、過去 1 万年で世界最大と判明、

<https://natgeo.nikkeibp.co.jp/atcl/news/24/040400191/>

噴出物は計 332~457 立方キロ以上。完新世地代の世界最大、

VE7=1815 Mount Tabora= 1.4×10^{20} J

VE8=VE7x31.6= 1.4×10^{21} J.....史上最強級

Undersea volcanoes don't just ooze, they also explode

Deep-sea volcanoes can explode instead of just oozing, scientists now confirm.

<https://www.nbcnews.com/id/wbna42378550>

海底火山は爆発しない。←間違い

陸上火山マグマ水分が水蒸気膨張爆発的噴火、深海底高水圧でマグマ中水分が水蒸気になれないため爆発的噴火は起きない。

Deep Ocean Volcanoes

<https://oceantoday.noaa.gov/deepoceanvolcanoes/#:~:text=NARRATOR%3A,deepest%20ocean%20eruption%20ever%20found.>

Scientists believe that 80 percent of the volcanic eruptions on Earth take place in the ocean. Most of these volcanoes are thousands of feet deep, and difficult to find. But in May of 2009, scientists captured the deepest ocean eruption ever found.

Largest underwater volcanic eruption recorded

<https://www.bbc.co.uk/newsround/58763097>

Underwater volcano belched explosive bubbles larger than a stadium

Secrets of Bogoslof's long 2017 eruption teased out through low-frequency sound

<https://www.science.org/content/article/underwater-volcano-belched-explosive-bubbles-larger-stadium#:~:text=Historically%2C%20at%20Bogoslof%20and%20other,emerges%20out%20of%20the%20ocean.>

海底火山爆発大エネルギー海中伝搬(Bubble pulse)が火山連動爆発の引き金に成り得る。

海底爆発:

時間空間局所では水は固く重い固体(大半径球面)弾丸に相当、大局では気体同様

Magma Flow Patterns in Dikes: Observations From Analogue Experiments

<https://agupubs.onlinelibrary.wiley.com/doi/full/10.1029/2022JB025463>

Fig2,.....Vm~0.001,~0.1m/s?

②突然の巨大ホットスポット発生火山爆発の可能性希薄<資料は見当たらない>。

世界のホットスポット画像参照、

<https://finding-geo.info/world/hotspot.html>

深海 6500メートルで発見された衝撃の真実【都市伝説予言オカルトスピリチュアルミステリー】

https://www.youtube.com/shorts/wr-yi3_qDYo

日常時間内で見える海底地形変化は脅威！！、

超巨大噴火(噴出量>1000 km³)は本当に存在し、将来起こるのか？

<https://kaken.nii.ac.jp/ja/grant/KAKENHI-PROJECT-22K18726/>

超巨大噴火二つの一つは約 200 万年前ホットスポットの北米イエローストーン、
インドネシアトバ火山、約 7 万年前に噴出したとされる

③ 預言海面隆起は人為爆発合成津波以外にない?! <後日詳細提示>

(1) ロシアの秘密の津波爆弾の仕組み (How the Secret Russian ...

<https://jp.voicetube.com/videos/137085>

ポセイドン爆弾=200Mt.,津波 600m.→津波 100m,爆弾=200Mt/(600/100)²=5.6Mt.

(2) **Mariana Trench Explosion**

<https://what-if.xkcd.com/15/>

$E(0.43 \times 10^6 \text{TNT}) = PV = P(3000 \text{m depth}) \times (4/3) \pi R^3$.

爆発膨張仕事 = (熱以外への配分) × 爆弾エネルギー = $E(1 \text{Mt} = 10^6 \text{TNT}) = 4.2 \times 10^{15} \text{ J} = M7 \times 2$.

$R = \{3E/4\pi P\}^{1/3} = \{3 \times 0.43 \times 10^6 \times 4.2 \times 10^9 \text{ J} / 4\pi \times 9.8 \times 10^3 \text{ kg} \times 3000 \text{ m}^2\}^{1/3} = 240 \text{ m}$

(3) 直径 500m の穴発生で、流れ込みから大津波発生へ、

(4) 初期衝撃波とバブルパルスが活火山マグマ打撃、

(5) **Undersea volcanoes don't just ooze, they also explode**

Deep-sea volcanoes can explode instead of just oozing, scientists now confirm.

<https://www.nbcnews.com/id/wbna42378550>

初期衝撃波とバブルパルス

(6) 海底火山爆発は初期衝撃波とバブルパルス発生、

バブルパルスによる衝撃波は爆発による衝撃波よりも大きな破壊力をもち、船舶や水中構造物に対する破壊力はこのバブルパルスによる。したがって、魚雷や機雷などの兵器に使用される爆薬は、爆風や爆速よりもバブルパルスが最大になるように作られている。

(7) **Underwater volcano belched explosive bubbles larger than a stadium**

Secrets of Bogoslof's long 2017 eruption teased out through low-frequency sound

<https://www.science.org/content/article/underwater-volcano-belched-explosive-bubbles-larger-than-stadium#:~:text=Historically%20at%20Bogoslof%20and%20other,emerges%20out%20of%20the%20ocean.>

海底火山爆発大エネルギー海中伝搬(Bubble pulse)が火山連動爆発の引き金に成り得る。

海底爆発:

時間空間局所では水は固く重い**固体(大半径球面)弾丸**に相当、大局では気体同様

④ 預言海面隆起は人為合成津波以外にない?!!

2011/3/11 震災は予行演習、その最終作戦か?!!、**なぜ日本(極東アジア)が?!!!**

① ナチス米国病的ドイツ人(Rockefeller)は敵には多勢迷惑無用**超執念深い**、

権力頂点の王侯貴族超富豪が如何に己頂点地位没落を恐怖するかを**愚鈍庶民は関知しない**
ロックフェラーやフィリップ殿下<Bildergroup>が殊更に人口削減を口にする理由!!!。

※**悪魔の起源**::高壁章(アル・アラーフ),マッカ啓示 206 節.11~18

(1)第一次大戦後欧州王族貴族没落を見た米資本頂点は背後ユダヤ人勢力=**階級闘争民族**
一掃を決意計画、かくて米資本裏支援で**ナチスドイツ**が成立、実際に歴史上未聞ユダヤ殲滅計
画を施工、第二次大戦は世界に歴上未曾有大惨事をもたらす、**このサイコパス病性!!!**

(2)今回のウクライナ戦争、イスラエルのガザ地獄化で世界がユダヤ人一斉非難、前者も後者も
ナチス米国陰謀で起きてる。白人ユダヤ人の発祥地はウクライナ&ロシアです。

② **一万年無階級文明達成の古代日本人=縄文人!!**、

日本文明証拠消滅をたくらむ理由!!

筆者は道楽者で世界の文化愛好者を自負、日本だけが特別の右旗振りは遠慮したいのだが、
但し証拠事実濃厚であれば、事実推定追及に躊躇しません。

**天皇家の秘密を視た男、木内鶴彦氏の2025年に対する生前最後の大予言と警告【3度の臨死
体験】で視た滅亡の未来と天皇家の隠された秘密【都市伝説予言】**

<https://www.youtube.com/watch?v=C3bMFPbTGvU>

無階級無戦争の縄文文明思想はシュタナー神智主義思想と同一で、物質快樂追及主義で
破滅招来現今世界文明とは対峙関係になります。

戦後世界逆さま根源ナチス再生米国:

<http://www.worldfuturefund.org/wffmaster/Reading/Quotes/hegelnew.htm>

A:敵を設定、覇権制覇を目指しての永久戦争路線: **THE GOOD OF WAR**

B:国家と国民は優生貴族の搾取対象 **PRIMACY OF THE STATE VS. THE INDIVIDUAL**

**【世界最古】4万年前の日本に文明が築かれていたことが判明!最古の文明に世界驚愕【都市
伝説歴史ミステリー】**

<https://www.youtube.com/watch?v=5YICZ5ijEs4>

**【日本起源説】世界で発見された日本の痕跡7選 - あの地域に隠された驚きの真実がヤバすぎ
た【都市伝説 ミステリー】**

<https://www.youtube.com/watch?v=ENQfHvnLJAU>

(1)長期凋落下現今の自信喪失日本人には階級闘争などは夢想にもなからう、だが然るに最近
はネット中心に日本人よ、古代縄文文明に**覚醒せよ**の檄が走行中。この**古代史研究は彼ら告発
で政治抑圧にある**と言う、他方石破首相は日米外交最高タブの日米地位強敵改定に言及、
全野党も賛同している。

(2)過去に阪神淡路大震災、東北大震災&福島原発破綻、前者は村山社会党政権、後者は菅民
主党政権で、戦後実質一頭独裁の自民米傀儡政権でなかった。

(3)世界の為に**日本古代(現代)重大証拠隠滅阻止**を世界に訴えます。

APPENDIX4::2011/3/11,US NAVY attacked Japan by earthquake weapon ..

This reports reveal and blame US NAVY by their damned crime against Japan(and Asia). Thereby,American must take the serious responsibility to pay the compensation.Also 1995,Hanshin-Awaji Great Earthquake was the weapon attack to innocent Japanese. Trump Presidency is innocent for the crimes,but neglecting the crime becomes crime.

U.S. military earthquake weapon attack = 3/11 The truth behind the collapse of the Tohoku Fukushima earthquake!

http://www.777true.net/the-convergence-to-genuine_J95-Reverification-on-the-Criminal-3_11.pdf

On 3/11, natural seismic force was artificially induced (electromagnetic seismic weapon HAARP), and the Tohoku Fukushima coast was destroyed as a result of tsunami synthesis using multiple remote-controlled submarine-based bombs in synchronization with the main shock. The damage caused by the main shock was surprisingly small. The US possesses special nuclear bomb and earthquake weapon technology, and **the destruction of Fukushima in the Tohoku region on 3/11 is a US military war crime!!!**,

The hidden Cause of attack against Fukushim NP(2011/3/11).

http://www.777true.net/the-convergence-to-genuine_J20-the-principal-criminal-Rockefeller.pdf

The November 2002 issue of the monthly magazine ``Zaikai-Tenbou=Financial Outlook" contained an article that cannot be missed. The article is ``The complete picture of the CIA's operation against Japan to manipulate Japan's electric power business policy." By the way, there are rumors that the CIA (U.S. Central Intelligence Agency) is an armada of the Rockefeller conglomerate (U.S. oil capital). This is because the Rockefeller Foundation makes large donations to the CIA. According to this article, the following recommendations were made in the CIA's investigation report on Japan's energy situation (February 2000).

"In order to prevent Japan's national power from growing further and from becoming **anti-American** in the future, **it is necessary to handcuff Japan in the energy sector for a long period of time**. Nuclear power generation in Japan already accounts for more than 30% of Japan's power sources. Therefore, it would be effective to reduce the power of **Tokyo Electric Power Company**, which controls Japan's nuclear technology. Tokyo Electric Power Company is Japan's most wealthy company and is a leader in the economic and financial worlds. It is also a powerful company with strong public trust. In order to prevent Japan from becoming nuclear-armed, it is necessary to significantly slow down the development of nuclear power generation technology

The related Articles::

http://www.777true.net/the-convergence-to-genuine_J72-Rockefeller-Must-Pay-Damage-Fukushima.pdf

Earthquake Weapon HAARP the **charge density wave** radiator **destructing epicenter chemical bonding**.

http://www.777true.net/the-convergence-to-genuine_J54-HAARP-Plasma-Oscillation-Mechanism.pdf

A chemical binding is due to electrostatic force between electron and nuclei,which is broken by **catalyzer**.

http://www.777true.net/the-convergence-to-genuine_J53-HAARP-Evidences-of-the-Mechanism.pdf

http://www.777true.net/the-convergence-to-genuine_J48-Water-Injection-Earthquake-the-Mechanism.pdf

http://www.777true.net/the-convergence-to-genuine_J43-Earthquake-Weapon.pdf

http://www.777true.net/From-the-9_11-to-the-3_11-Japan-Earthquake-Massacre.pdf

<http://www.777true.net/HAARP-the-Earthquake-Weapon-Mechanism.pdf>

APPENDIX-1: Minimum Learning on Geology.

① *Minimum Learning on Geology Dynamics.*

Structure of the Earth

<https://www.bbc.co.uk/bitesize/articles/z9qpsk7#zpgwqfr>

the outside are the **crust** –the rocky outer layer. the **mantle** – the semi-solid middle layer. the **core** - inner core(solid) and outer core(liquid-Fe-Ni).

plate-lithosphere

https://en.wikipedia.org/wiki/Plate_tectonics

see the *Diagram of the internal layering of Earth (lithosphere,,asthenosphere)*

② *Plate Tectonics* <see the 1minutes video>

<https://pnsn.org/outreach/about-earthquakes/plate-tectonics#:~:text=The%20Pacific%20Plate%20is%20moving,Ocean%2C%20the%20Mid%20Atlantic%20Ridge.>

Volcanism and seismic events are ruled by **Plate Tectonics**.it is **heat convection dynamics** toward entirely **heat dissipating** to outer space from heat source core of earth.

☠; Although, recent global warming had become broken the **poop dissipating**. What happen!

③ *Magma chamber*

https://en.wikipedia.org/wiki/Magma_chamber

Supervolcano eruptions are possible only when an extraordinarily large magma chamber forms at a relatively shallow level in the crust. the rate of magma production is quite low, around 0.002 km³/year, sufficient magma for a supereruption takes 10⁵ to 10⁶ years.

Critical Magma chamber Volume, Energy = V_{mc}, U_m of Supervolcano Eruption.

$$V_{mc} = 0.002 \text{ km}^3/\text{y} \times (10^5 \sim 10^6) = 2.0 \times (10^2 \sim 10^3) \text{ km}^3/.$$

P_m = 200 to 250 MP..... There are two magma chambers: approximately 10km and 5km deep.

$$U_m = V_{mc} \rho_m C_{pm} T_m = 5.8 \times 10^{17} \times 500^\circ\text{C} = 2.9 \times 10^{20} \text{ J} / 10^5 \text{ to } 10^6 \text{ years} \rightarrow J_m = 2.9 \times 10^{14} \sim 10^{15} \text{ J/y}$$

.. Largest volcanic eruption **1.27 × 10²⁰ J** 1815 eruption of Mount Tambora

temperature, density, specific heat by constant pressure.

$$T_m = 650 - 1300^\circ\text{C}; \rho_m = 2,400 \text{ kg/m}^3; C_{pm} = 1.2 \times 10^3 \text{ J/kgK} . :$$

The true identity of the "amazing eruption" that killed 90% of humanity 70,000 years ago

<https://diamond.jp/articles/-/358922>

*magma chambers lifespan 1.x10⁶ years, a chain of volcanoes has a history of 10⁵ years or more. The world's largest caldera in Indonesia's **Toba Volcano** erupted 74,000 years ago.*

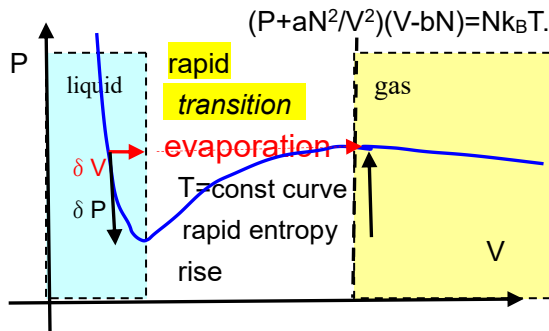
The first eruption 1.2x10⁶ years ago. A large-scale eruption occurred 5x10⁵ years ago in the northwest of the caldera. Last eruption 7.4,x10⁴ years ago.

APPENDIX2::Liquid Magma Evaporation toward VOLCANO ERUPTION !.
Small displacement in MAGMA Volume cause large pressure fluctuation ,which cause **explosive MAGMA Evaporation** toward Volcano Eruption.

Volcano eruption is caused by temperature rise,or pressure down with the magma critical $\{T_c, P_c\}$.

(1) Liquid Gas Phase Transition of MAGMA by Hitting a Seismic Force.

Van Der Waals State Equation tells small volume change= δV causes large pressure one= δP toward the **sudden evaporation as irreversible process !**



It's that thing when you open the lid of a carbonated drink and the volume increases slightly, causing bubbles to gush out all at once.

* $H_2O + CO_2 \rightleftharpoons H_2CO_3$ carbonated drink
 * $H_2O + SiO_2 \rightleftharpoons H_2SiO_3$ siliconated **MAGMA**

(2) δV is caused by external force of such low frequency Seismic force.

An eruption may occur within 24 hours

Volcanic disasters and eruption prediction <Warning criteria used to predict eruptions at Mt. Pinatubo>,
<http://www.kazan-g.sakura.ne.jp/J/koukai/98/ida.html>

level 4: Strong activities such as harmonic tremors and low-frequency earthquakes,
An eruption may occur within 24 hours.

δV is caused toward eruption tunnel due to shocking seismic wave by earthquake or volcano eruption compressing and squeezing out magma from a volcano when magma state is in near critical state= $\{T_c, P_c\}$.

(3) δV is caused by external force **cracking the solid surface** for magma leakage.

This is to accomplish by seismic shock wave of **high frequency component.**

(4) Interlocking Mechanism between Volcanoes & Earthquakes.

☞; This is one of most important kernel item in this report !!!.

For those interested in the interlocking phenomena between volcanoes and earthquakes:
https://sakuya.vulcania.jp/koyama/public_html/volcanology/rendo.html

Volcanic eruptions and crustal stress fields - conventional research

The existence of linked phenomena between eruptions and earthquakes or between eruptions has been pointed out for a long time (Taneda, 1948, 1975; Sameshima, 1953).....

*We actually calculated the changes in the crustal strain field around the earthquake fault caused by the **Philippine earthquake**, and thought that the increase in compressive strain near the **Pinatubo volcano** squeezed out the magma.*

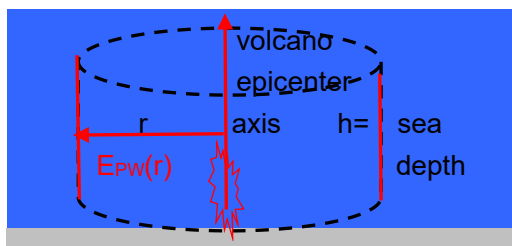
**APPENDIX3::Magma Volume Rise= δV by Pulse Wave Hitting in submarine.
Rapid Interlocking between Volcano & Volcano.**

Seafloor Volcano Eruption Generates Stronger **Bubble Pulse** .

Volcanoes make massive undersea bubbles – and scientists are listening

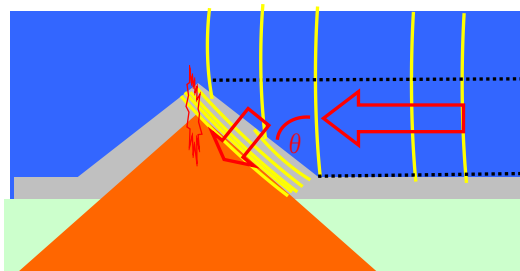
<https://abcnews.go.com/Technology/volcanoes-make-massive-undersea-bubbles-scientists-listening/story?id=66535341#:~:text=Their%20results%2C%20published%20in%20the,considered%20on%20the%20smaller%20side>

Interlocking between earthquake & earthquake is not rapid. Time between epicenter breaking down and tremolo starting is long time<few days,year>. While, displacement in magma chamber shape with magma liquid leaking is rapid(<day?).

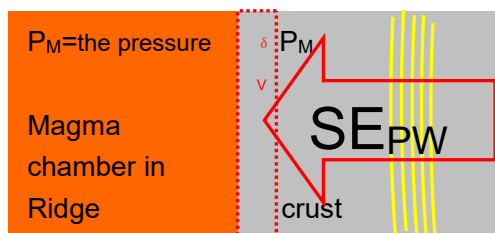
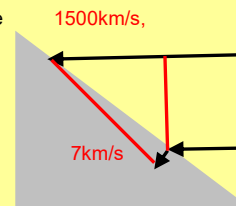


Volume Rise= δV by Pulse Wave Hitting

Intermediate volcanic eruption $1.5 \times 10^{18} J$
 $E_{VC}(r=0)$ =seafloor volcano energy $\sim 10^{18} J??$
 K_{PW} =bubble pulse wave ratio $\sim 1/10?$
 $E_{PW}(r)=K_{PW}E_{VC}(r=0)/2\pi r h$;Cylinder Wave Energy Density.



Velocity of sea water sound=1500km/s,
 while that of crust seismic P wave =7km/s. Then refraction causes
perpendicular incident
 toward just magma
 the coming epicenter.



Volume Rise= δV by Pulse Wave Hitting

{ $E_{VC}(r=0)$ =volcano energy, K_{PW} =pulse wave ratio}
 $E_{PW}(r)=K_{PW}E_{VC}(r=0)/2\pi r h$;Cylinder Wave Energy Density.
 $E^*_{PW}=\cos \theta E_{PW}(r)$: θ =refraction seismic P wave?
 $\delta V=S\delta x$volume rise
 $SE^*_{PW}=P_M\delta V=P_M S\delta x. \Rightarrow \delta x=E^*_{PW}/P_M$

An Example Calculation)

$E_{VC}(r=0)$ =seafloor volcano energy $\sim 2\pi 10^{17} J? \rightarrow K_{PW}=0.1, h=2.5km, r=40km? \rightarrow E_{PW}(r)=10^8 J/m^2$.
 $\rightarrow \cos \theta =0.1? \rightarrow E^*_{PW}=10^7 J/m^2. \rightarrow P_M=g\{ \rho (sea)d(sea depth)+ \rho (crust)d(crust depth)\}$
 $P_M=9.8\{1030kg/m^3 \times 2.5km\}+3000kg/m^3 \times 10km\}=3.2 \times 10^8 P. \rightarrow \delta x=E^*_{PW}/P_M=0.03m???$

APPENDIX4:Explosion or Eruption ;;Energy Hierarchy of Volcanism.

<http://www.777true.net/Explosion-or-Eruption.pdf>

☼：爆発反応は小摂動始動ながら、一度始まると燃料消耗迄止まらない、連鎖反応問題。

英語では火山噴出(eruption)と書くが、火山化学反応実態を見る爆発反応で、間違いです、

☼：但しホットスポット火山は溶岩噴出にもなる、本件は海溝沈下加水性マグマ火山。

化学反応エネルギー会計を見ると、,火山爆発=水素爆発<1/2>+酸化珪素保持熱(溶岩<1/2>)、サイダ-CO2泡吹きと例えられるが、H2O噴出でなくそれ以上の内容に注意、

*H2O+SiO2⇌H2SiO3..... siliconated **MAGMA**

H2O+SiO2⇌H2SiO3→SiO3+H2+(1/2)O2→SiO2+H2O+237kJ.

加水マグマ流動化 {液体ガス相転移}

水素爆発

☼：目立たない所に up load 翌日、筆者のお腹が火山爆発性下痢で苦しめられましたが、後遺症が無ければ医療費0で済むのだが<筆者米企業勤務時代に同様経験、一時腎臓悪化>、昨日は長期耳鳴りの障害緩和器の電池が故意短絡、夜中に電池探しで苦しめられました。